



Sample Preparation for Proteomics

Please Help us Help you Keep Sample Processing Time as Swift as we can

Just 10 minutes of
your preparation
can help us
process your
samples quicker



Contact Us



Sample Labeling



Sample Storage – Microcentrifuge Tubes



Common Issues

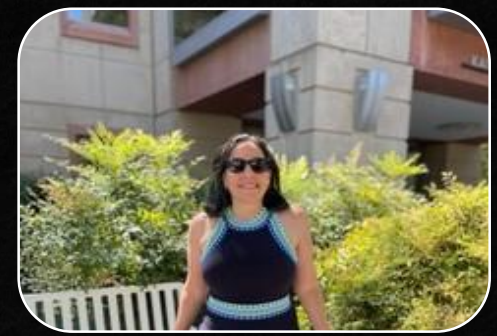


The Submission Sheet

Please Always Email the
Core Member you
Work with Before
Beginning the Process
of Submitting Samples
so that we know to
expect your samples



[Gabriela Grigorean, Ph.D.](#)
Project Scientist
ggrigorean@ucdavis.edu



[Michelle Salemi](#)
Staff Researcher
msalemi@ucdavis.edu



[John Schulze](#)
Staff Researcher
jmschulze@ucdavis.edu



Lauren Dixon
Staff Researcher
lydixon@ucdavis.edu

For AAA please visit this [site](#) instead.

Sample Labeling

Process samples as you would in your lab and create labels for shipment to us following these guidelines

- Samples sent to us should be labeled with your unique ID on the top of the tube using your initials and a number:
 - For example – First, Last becomes FL#
- Start your first set using FL1. Start any subsequent sets with the next number
 - **Do not** include any other information on the tubes
 - Conditions are only input in sample submission form
- See right for a properly labeled example set and sample sheet from the submission system (f.1)
- Write the labels on the top of a **connected** tube cap
 - Using labels on the sides of tubes is ok
 - **Do not** use any form of tape as a label as they are too thick to have in a centrifuge or in a rack
- See the right for a proper tube label (f.2)

f.1 – showing sample labels for submitter Lauren Dixon

A following set should be labeled LD8 and on

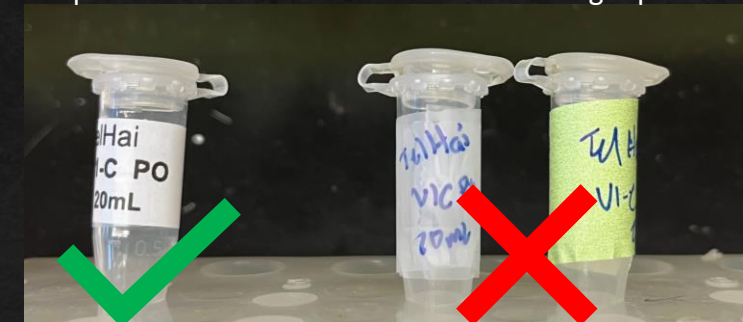
Samplesheet: - 10 samples

☒ Show descriptions RESIZE COLUMNS ▾

<input type="checkbox"/> *Name of sample	*Unique ID	Condition	Only if you digested your own...
	Give each sample a 3 digit identifier starting with your Initials. Label your tubes with		Volume to inject if these are prepared by you.
<input type="checkbox"/> Mouse 1 - ctrl	LD1	Control	
<input type="checkbox"/> Mouse 2 - ctrl	LD2	Control	
<input type="checkbox"/> Mouse 3- ctrl	LD3	Control	
<input type="checkbox"/> Mouse 1 - low fat	LD4	Low Fat	
<input type="checkbox"/> Mouse 2 - low fat	LD5	Low Fat	
<input type="checkbox"/> Mouse 3- low fat	LD6	Low Fat	
<input type="checkbox"/> Mouse 1 - high fat	LD7	High Fat	
<input type="checkbox"/> Mouse 2 - high fat	LD8	High Fat	
<input type="checkbox"/> Mouse 3- high fat	LD9	High Fat	

f.2 – showing the usage of labels

Proper labels should be made – not masking tape or scotch tape



Sample Storage

Help us save time from needing to transfer tubes



Tubes

Please use 0.5, 1.5, or 2.0ml microcentrifuge tubes with connecting snap caps

Good Examples:

[Eppendorf Flex Tube 1.5ml: 022364111](#)

[Eppendorf Safe-Lock 1.5ml: 0030123611](#)

[Eppendorf Protein Low-Bind 1.5ml: 022431081](#)

[VWR Low-binding 1.5ml: 76332-068](#)



Don't Use

Please do not use screw cap tubes, PCR tubes, or test tubes of any size.

Please do not use inserts.

This is because our equipment is not compatible with these types of tubes.



Keep your Tube Whole

Please do not cut off tube caps.

Please do not punch a hole in the top of your cap.

Caps are more likely to be lost and samples dry out if this is done.



Common Issues

- How do you ship samples on beads?
 - Ship these samples on wet ice. Do not freeze samples with beads.
- How do you ship protein samples?
 - Frozen on dry ice.
- How do you ship peptide samples?
 - Peptides in liquid should be shipped frozen.
 - Dried peptides may be shipped on ice packs or in an envelope.
- Why are my samples being delayed in processing?
 - There are many potential reasons: machines may be down, we are busy with many samples, or due to unclear sample labeling
 - Did you send an email to a member of the Core? We cannot start work until we hear from you which is why you should email us before submitting any samples.
- You can see the [FAQ](#) for more questions regarding sample preparation, estimates, and more.

The Sample Submission Sheet

The sample submission sheet is the last step in submitting samples to the UC Davis proteomics Core facility. There are a few things to note that will greatly help us work on your samples.

- Under payment:
 - The PPMS account and email should match either yourself or your PI. Please specify the financial account that you would like us to charge you to.
- In submission information:
 - Specify the organism that your sample is from.
 - Specify the Uniprot ID for that organism that you want us to use.
 - Specify who you emailed before submitting this sample set.
 - Specify the recipe for the buffer that the sample is currently in.
- For our safety please double check the biohazard rating of whatever you send us and include it in the sheet.